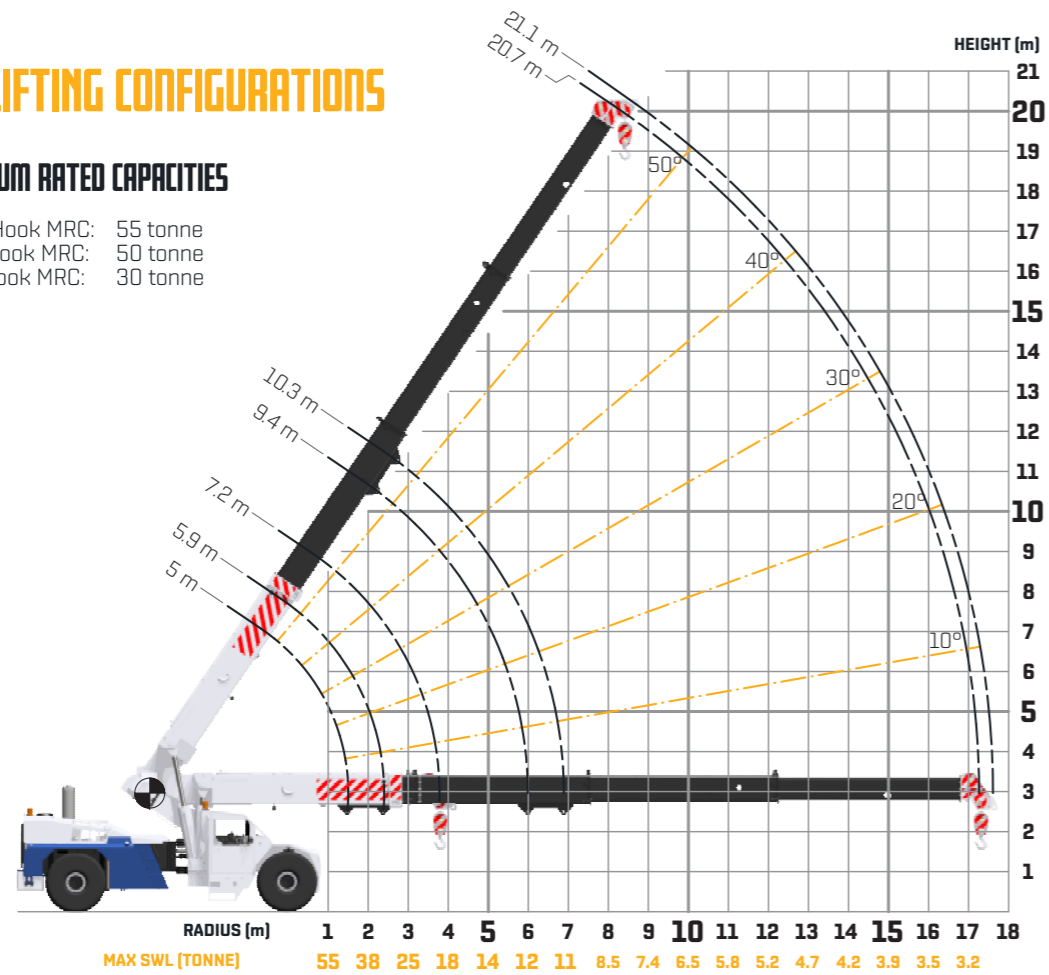


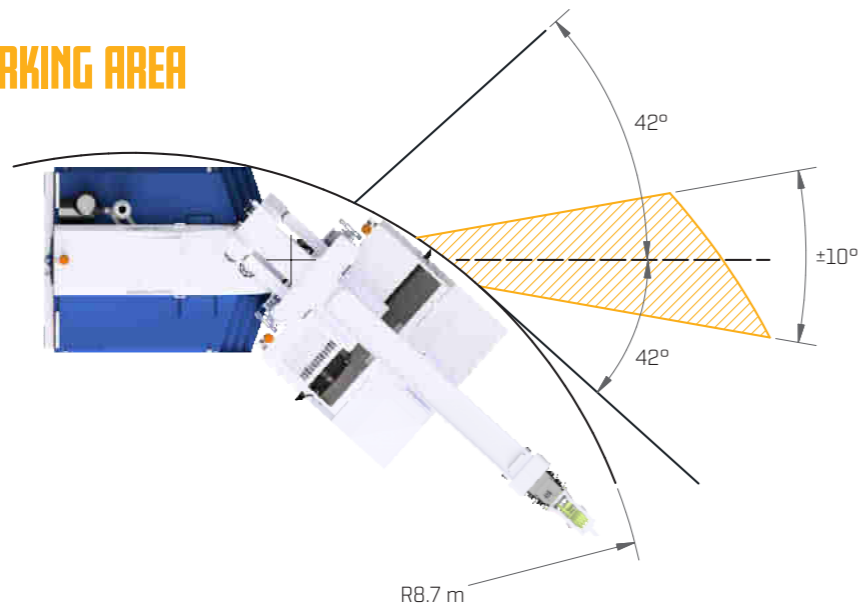
ALL LIFTING CONFIGURATIONS

MAXIMUM RATED CAPACITIES

Sliding Hook MRC: 55 tonne
 Winch Hook MRC: 50 tonne
 Rhino Hook MRC: 30 tonne



WORKING AREA



HUMMA 55T

WORLD'S FIRST AUTO LEVELLING PICK & CARRY CRANE

- » Huge 55T lifting capacity
- » Operate on uneven ground up to 5° side slope with no derate
- » Road registered*

**HUMMA
 CRANES**
 BY DRA ENGINEERING



**HUMMA
 CRANES**
 BY DRA ENGINEERING



Matera



The manufacturer reserves the right to alter the product specification without notice.

*Road registration in approved states.

SPECIFICATIONS

ENGINE

- » Cummins ISC285
- » 213 KW 1085 NM
- » Exhaust brake
- » ADR 80/02 Compliant

TRANSMISSION

- » Allison 3000SP
- » Fully automatic 6 speed
- » TC417 Converter

TRANSFER CASE

- » Marmon Herrington direct mount DTC60
- » No driveshaft between transmission and transfer case
- » 2/4WD & Hi/Lo air shifted
- » 2.25:1 low ratio 1.09:1 high ratio

AXLES

- » Kessler D91PL489 high-speed planetary axles
- » Wedge brake operation
- » Rear axle diff lock
- » Front wheel holding brake

TYRES AND RIMS

- » 16.00 x 25 x 32pr cross ply tyres
- » 25"x 11.25" 24 stud 425 PCD wheels

DIMENSION

- » 10.95m long
- » 3m wide
- » 3.6m high
- » 5.28m wheel base
- » 5.0m inside wheel turning circle

SUSPENSION

- » Hydraulic suspension with 3 modes:
 - 1) Travel mode for driving
 - 2) Lowered and locked for conventional crane operation
 - 3) Dynamic levelling for crane operation on uneven ground up to 5 degrees

HYDRAULICS

- » Danfoss 147cc load sensing piston pump for steering and crane controls
- » Danfoss 63cc load sensing piston pump for crane suspension control
- » Automatically controlled electric emergency steering pump
- » Danfoss PVG control valve with CAN Bus control
- » Suction, pressure and return filtration with separate oil cooler

TANK SIZE

- » Diesel - 320L
- » Hydraulic oil - 320L

CABIN

- » Rubber mounted for vibration and noise isolation
- » Standard features include:
 - Driver and passenger air seat
 - 4 colour camera CCTV
 - Adjustable steering wheel
 - Separate heating and air conditioning units
 - Dual 12" colour touch screens
 - Joystick crane controls with winch speed and creep speed buttons

386 CUSTOM LMI

- » Winch hour logging
- » Crane lift logging
- » Lift logging review on screen
- » Dynamic load charts
- » No articulation zones, SWL derates dynamically
- » Stationary chart for extra lift capacity
- » Automatic side slope deration if suspension locked
- » Creep mode for fine crane control
- » Soft stops at maximum cylinder travel
- » Boom raised while travelling alarm
- » Drivers door open without park brake applied alarm
- » Holding brake engaged while crane in movement alarm

ARTICULATION AND BOOM PIVOTS

- » 120mm diameter Articulation pins with adjustability
- » 180mm diameter Boom Pivot and Luffing pins

BOOMS

- » 4 part booms pressed and fabricated
- » Fully powered out to 20.7m
- » Dual hydraulic cylinders
- » 6.25T single line pull Brevini winch
- » Grooved winch drum with rope tensioner
- » 2 speed winch
- » Reeved 8 parts for 50T
- » 50T and 38T Hook blocks
- » Digital rope compensation

AXLE LOADINGS

- » Front axle 13,900kg
- » Rear axle 13,900kg

HUMMA 55-25 55T CRANE

The Humma 55-25 55T crane combines the largest lift capacity with the highest levels of safety to produce the world's most advanced pick and carry crane.

Huge 55T lifting capacity with an advanced dynamic hydraulic suspension allows the Humma to operate in places never thought possible. With automatic levelling engaged the Humma can pick and carry over uneven ground up to 5 degrees without need for deration charts.

Out of level lifting is the biggest safety concern and cause of the majority of crane incidents. Even lifting on level ground can put the crane into an out of level condition due to tyre deflection. Existing solutions rely on operator ability to derate their capacity from a chart or travel a pre-determined route to check the slope conditions. The Humma 55T and its dynamic hydraulic suspension will automatically level the crane during lifting, keeping the chassis at a level 0 degrees.

85km/h road speeds and road registrable means the Humma is versatile and can be moved from site to site with ease.

An advanced electronics control system incorporates Dual 12" colour touch screens displays. Large easy to read LMI incorporating on screen data logging, dynamic load charts and soft stops on the hydraulics. Separate Crane, Winch and Travel hours allow for accurate crane life history.

The Humma 55T is the new standard in high capacity pick and carry cranes.



DYNAMIC HYDRAULIC SUSPENSION

Automatic levelling suspension allows pick and carry crane operation on uneven ground up to 5 degree side slope with no derate.

Conventional lowered and locked suspension can be also be used with a deration on SWL.



DYNAMIC LOAD CHARTS

Maximum SWL calculated for exact position and articulation angle. No more articulation zones. Stationary load chart allows higher capacity SWL when not mobilising.



DATA LOGGING

Winch hours, Crane hours and Lift logs are able to be viewed on the displays. The information can also be downloaded to a USB stick for review.



DUAL 12" COLOUR TOUCH SCREENS

Large easy to read colour touchscreen displays for Crane LMI and instrumentation. Onboard diagnostics and a range of warning alarms.



5T COUNTERWEIGHT

Removeable 5T counterweight for high lifting capacity



INTERCHANGEABLE HOOK BLOCKS

6 part 38T hook block for general use. 8 part 50T hook block for high capacity lifts.

Smaller hooks can be used safely when selected via the LMI.