

**HUMMA  
CRANES**  
BY DRA ENGINEERING



Matera



# 35-25 MK3

- \_ **The Heavy Lifter**
- \_ **Proven Low Operating Costs**
- \_ **Proven Safe Operating History**
- \_ **Proven Safe Driving At 100km/h**
- \_ **Longest Boom in Its Class**



- » MAX SWL. 35T @ 1.4M
- » Max Boom Length. 20.9M
- » Max Tip Height. 20.5M





# 35-25 MK3

The Humma UV35-25 35T crane is a highly versatile, high capacity pick and carry crane. The emphasis has been placed on operator safety and comfort while still retaining the toughness of a mine specialised vehicle.

The removable counterweight makes the crane at home either on a mine site operating at high capacity, or on the road at high speeds rushing between jobs. Airbag suspension provides the operator with an extremely stable, safe and smooth ride while at the same time reducing maintenance costs as there is no articulation and boom pivot wear. The automotive spec Cummins 8.3L engine is highly fuel efficient with up to 25% fuel savings over comparable machines. As standard, the engine is fitted with a Jacobs exhaust brake which supplies greater stopping power and greatly reduces wear in the standard braking system. All these features combine to produce a very low maintenance machine.

These features combined make the Humma UV35-25 the smart choice for a high capacity Mine & Road capable crane.

- » **Max SWL. 35T @ 1.4M radius**
- » **SWL 30T @ 2M radius**
- » **SWL 20.6T @ 3M radius**
- » **SWL 2.35T @ 17.4M radius**
- » **Max Boom Length. 20.9M**
- » **Max Tip Height. 20.5M**
- » **Single Line pull 5T**
- » **Rhino Hook 20T**
- » **Dynamic LMI (Side Slope Derating)**



## FULLY POWERED BOOM

Four fabricated booms fully powered to extend to an impressive 20.9m of length with no manual extension required.

Over 26M of boom length with optional telescopic flyjib. Fully digital rope compensation. Under boom sliding hooks allowing for low clearance lifting.



## 3T COUNTERWEIGHT

Removable 3T counterweight design to allow for easy transport between sites but still retain high lifting capacity.



## 4 CAMERA SYSTEM

A unique 4 camera colour system, featuring a rear and 2-side cameras, allows for full 360-degree vision. A 4th camera is mounted onto the boom to monitor the winch drum.



## AIRBAG SUSPENSION

Airbag suspension provides the operator with unparalleled levels of comfort. More importantly it removes all shock loading and vibration through the crane chassis. This results in very low maintenance costs with no line boring of articulation or boom pivots required.



## CLIMATE CONTROLLED CABIN

Separate roof-mounted over sized air-conditioning and in dash heating systems. Designed for operation in the harshest Australian climates up to 45 degrees.



## DYNAMIC 386 LMI

Fully dynamic 386 LMI with optional side slope deration built in for safe crane control

Separate colour LMI and crane instrumentation displays provide the operator with full control of their crane for easy viewing.



**The only Australian Made and Owned** range of Pick and Carry Cranes.

**2 year / 2000hr** Warranty.

Major inspection at **15 year / 15000hrs.**

**Proven low maintenance design** over 25 years.

Airbag suspension creating **smooth stable drive** with no shakes or death wobbles.

**No wearing out of articulation joints** and boom pivots or broken leaf springs.

Automotive engine provides **up to 25% fuel savings** and smooth performance.

The longest fully powered **boom to 26M** with optional telescopic flyjib.

## SPECIFICATIONS

### ENGINE

- » Cummins ISC285
- » 213 KW 1085 NM
- » Jacobs exhaust brake
- » ADR 80/02 Compliant

### TRANSMISSION

- » Allison 3000SP
- » Fully automatic 6 speed
- » TC417 Converter

### TRANSFER CASE

- » ZF VG 750
- » 2/4WD & Hi/Lo air shifted
- » 2:1 low ratio 1:1 high ratio

### AXLES

- » Kessler D81PL477 high-speed planetary axles
- » Wedge brake operation
- » Rear axle diff lock
- » Front wheel holding brake

### TYRES AND RIMS

- » 14.00 x 20 x 20 cross ply tyres
- » 20"x 10" 10 stud 335 PCD wheels

### SUSPENSION

- » Airbag suspension with shock absorbers
- » Front suspension lock pins for crane stability

### HYDRAULICS

- » Danfoss load sensing piston pump 147cc
- » Automatically engaging electric emergency steering pump
- » Electric proportional crane controls
- » Suction, pressure and return hydraulic oil filtration
- » Hydraulic oil cooling

### TANK SIZE

- » Diesel - 320L
- » Hydraulic oil - 320L

### CABIN

- » Rubber mounted for vibration and noise isolation
- » Driver and passenger air seat
- » 4 colour camera system
- » Adjustable steering wheel
- » Separate heating and air conditioning units
- » AC unit oversized for Australian conditions
- » Murphy PV750 digital display with error logging
- » Fully dynamic 386 Load Moment Indicator with optional side slope derating
- » Dynamic load charts including side slope and stationary mode.

### ARTICULATION

- » 120mm diameter articulation and boom pivot pins with spherical bearings
- » Adjustable articulation joint.

### BOOMS

- » 4 part booms fully fabricated
- » Fully powered out to 20.5m
- » Dual hydraulic cylinders
- » 5T single line pull winch with tensioner
- » 2 speed winch option
- » Reeved 6 parts for 30T
- » 20T Rhino hook

### DIMENSION

- » 10.7m long
- » 2.7m wide
- » 3.1m high
- » 5.0m wheel base
- » 5.0m inside wheel turning circle

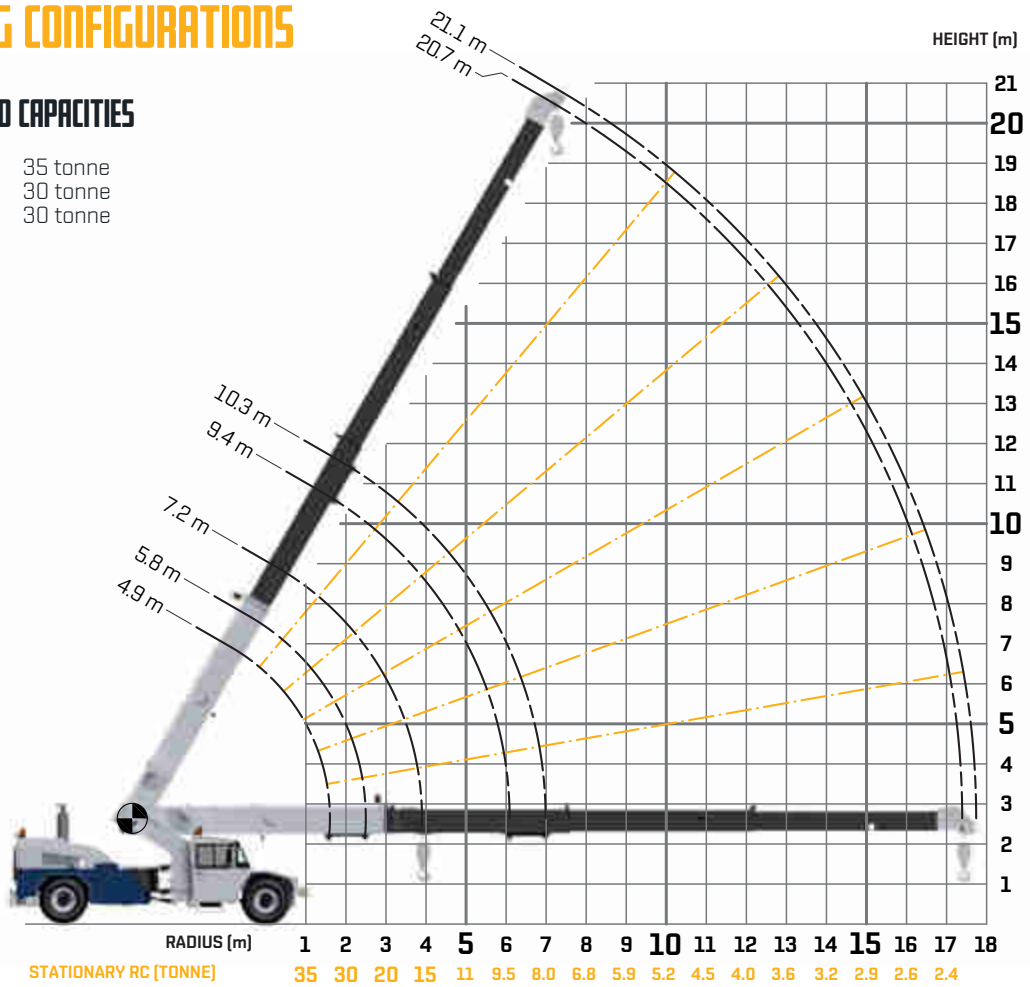
### AXLE LOADINGS

- » Front axle 11,500kg
- » Rear axle 11,800kg

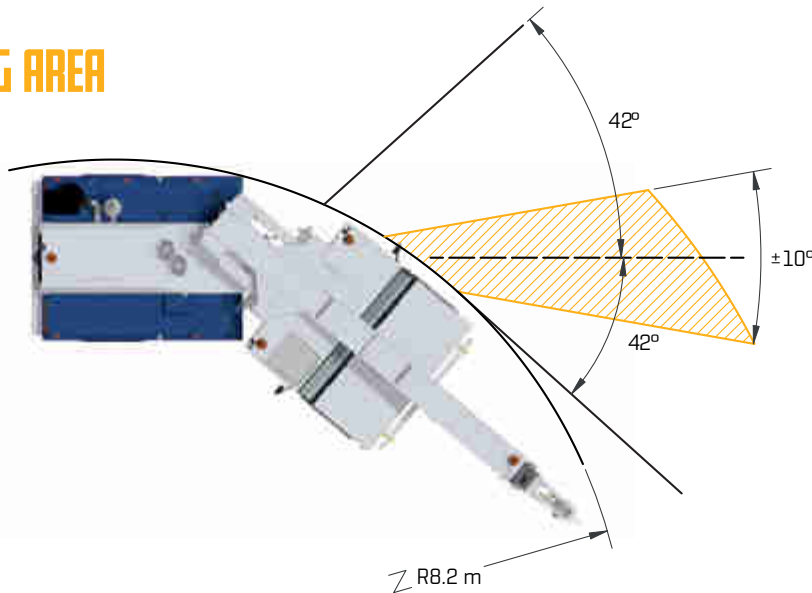
# ALL LIFTING CONFIGURATIONS

## MAXIMUM RATED CAPACITIES

- Sliding Hook MRC: 35 tonne
- Winch Hook MRC: 30 tonne
- Rhino Hook MRC: 30 tonne



## WORKING AREA



**HUMMA  
CRANES**  
BY DRA ENGINEERING



Matera

The manufacturer reserves the right to alter the product specification without notice.

\*Road registration in approved states.