

**HUMMA
CRANES**
BY DRA ENGINEERING

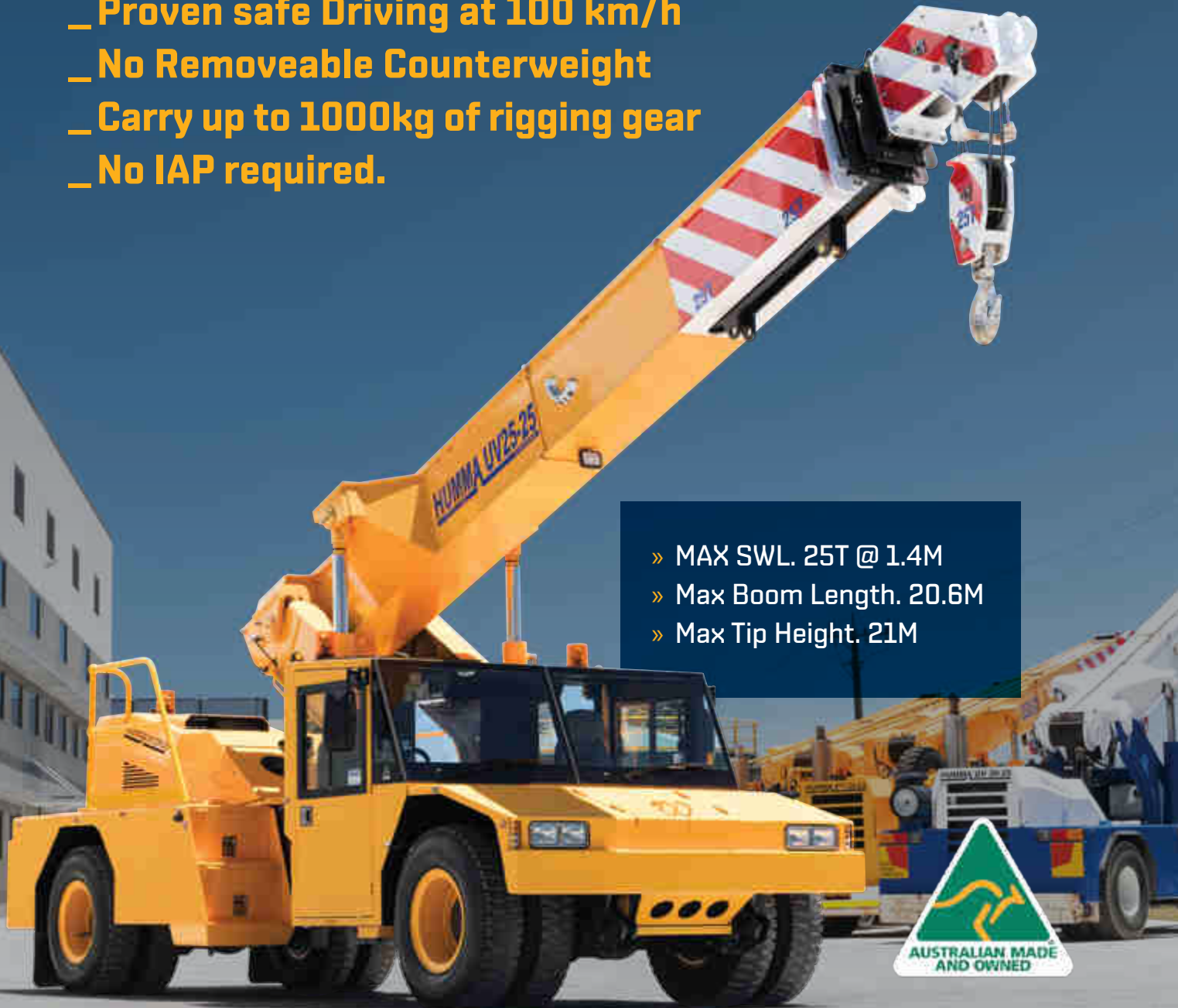


Matera



25-25 MK2

- _ Proven Low Operating Cost
- _ Proven Safe Operating History
- _ Proven safe Driving at 100 km/h
- _ No Removeable Counterweight
- _ Carry up to 1000kg of rigging gear
- _ No IAP required.



- » MAX SWL. 25T @ 1.4M
- » Max Boom Length. 20.6M
- » Max Tip Height. 21M





25-25 MK2

The Humma 25-25 Crane's modular design allows for a mobile pick and carry crane that combines all the features of the Humma 20-25 but with increased lift capability.

The combination of comfort, safety, low maintenance and running costs makes the Humma UV25-25 mobile crane a smart choice.

This articulated mobile pick and carry crane combines all the features and advantages of the Humma 20-25 mobile crane, with greater lift capacity.

Additionally the crane is under 2.5m wide and within 12T per axle, allowing for better access on city roads and reduced permit requirements. No IAP required.

Absence of a moveable counterweight ensures simplicity of use and extra capacity for carrying chains and slings.

- » **Max SWL. 25T @ 1.4M radius**
- » **SWL 15.1T @ 3M radius**
- » **SWL 1.6T @ 17.3M radius**
- » **Max Boom Length. 20.6M**
- » **Max Tip Height. 21M**
- » **Single Line pull 5T**
- » **Rhino Hook 20T**



FULLY POWERED BOOM

Four fabricated booms fully powered to extend to an impressive 20.9m of length with no manual extension required.

Over 26M of boom length with optional telescopic flyjib. Fully digital rope compensation. Under boom sliding hooks allowing for low clearance lifting.



FIXED COUNTERWEIGHT

No moveable counterweight. Allows extra capacity for chains and sling storage. Easier to operate and less setup time.



4 CAMERA SYSTEM

A unique 4 camera colour system, featuring a rear and 2-side cameras, allows for full 360-degree vision. A 4th camera is mounted onto the boom to monitor the winch drum.



AIRBAG SUSPENSION

Airbag suspension provides the operator with unparalleled levels of comfort. More importantly it removes all shock loading and vibration through the crane chassis. This results in very low maintenance costs with no line boring of articulation or boom pivots required.



CLIMATE CONTROLLED CABIN

Separate roof-mounted over sized air-conditioning and in dash heating systems. Designed for operation in the harshest Australian climates up to 45 degrees.



DYNAMIC 386 LMI

Fully dynamic 386 LMI with optional side slope deration built in for safe crane control

Separate colour LMI and crane instrumentation displays provide the operator with full control of their crane for easy viewing.



The only Australian Made and Owned range of Pick and Carry Cranes.

2 year / 2000hr Warranty.

Major inspection at **15 year / 15000hrs.**

Proven low maintenance design over 25 years.

Airbag suspension creating **smooth stable drive** with no shakes or death wobbles.

No wearing out of articulation joints and boom pivots or broken leaf springs.

Automotive engine provides **up to 25% fuel savings** and smooth performance.

The longest fully powered **boom to 26M** with optional telescopic flyjib.

SPECIFICATIONS

ENGINE

- » Cummins ISC285
- » 213 KW 1085 NM
- » Exhaust brake
- » ADR 80/02 Compliant

TRANSMISSION

- » Allison 3000SP
- » Fully automatic 6 speed
- » TC417 Converter

TRANSFER CASE

- » ZF VG 750
- » 2/4WD & Hi/Lo air shifted
- » 2:1 low ratio 1:1 high ratio

AXLES

- » Kessler D81PL477 high-speed planetary axles
- » Wedge brake operation
- » Rear axle diff lock
- » Front wheel holding brake

TYRES AND RIMS

- » 12.00 x 20 x 20 cross ply tyres
- » 20"x 8.5" 10 stud 335 PCD wheels

SUSPENSION

- » Airbag suspension with shock absorbers
- » Front suspension lock pins for crane stability

HYDRAULICS

- » 3 segment crane pump with electric disconnect feature. 335 L/min
- » Single segment crane steering pump. 87 L/min
- » Automatically engaging electric emergency steering pump
- » Electric proportional valve control
- » Dual return tank top filters

TANK SIZE

- » Diesel - 320L
- » Hydraulic oil - 320L

CABIN

- » Rubber mounted for vibration and noise isolation
- » Standard features include:
 - » Driver and passenger air seat
 - » 4 colour camera system.
 - » Adjustable steering wheel
 - » Separate heating and air conditioning units
- » AC unit oversized for Australian conditions
- » Murphy PV750 digital display with error logging
- » Fully dynamic 386 Load Moment Indicator with optional side slope derating

ARTICULATION

- » 100mm diameter articulation and boom pivot pins with spherical bearings
- » Adjustable articulation joint.

BOOMS

- » 4 part booms fully fabricated
- » Fully powered out to 20.5m
- » Dual hydraulic cylinders
- » 4.2T single line pull winch
- » 2 speed winch
- » Reeved 6 parts for 25T

DIMENSION

- » 10.7m long
- » 2.5m wide
- » 3.1m high
- » 5.0m wheel base
- » 5.0m inside wheel turning circle

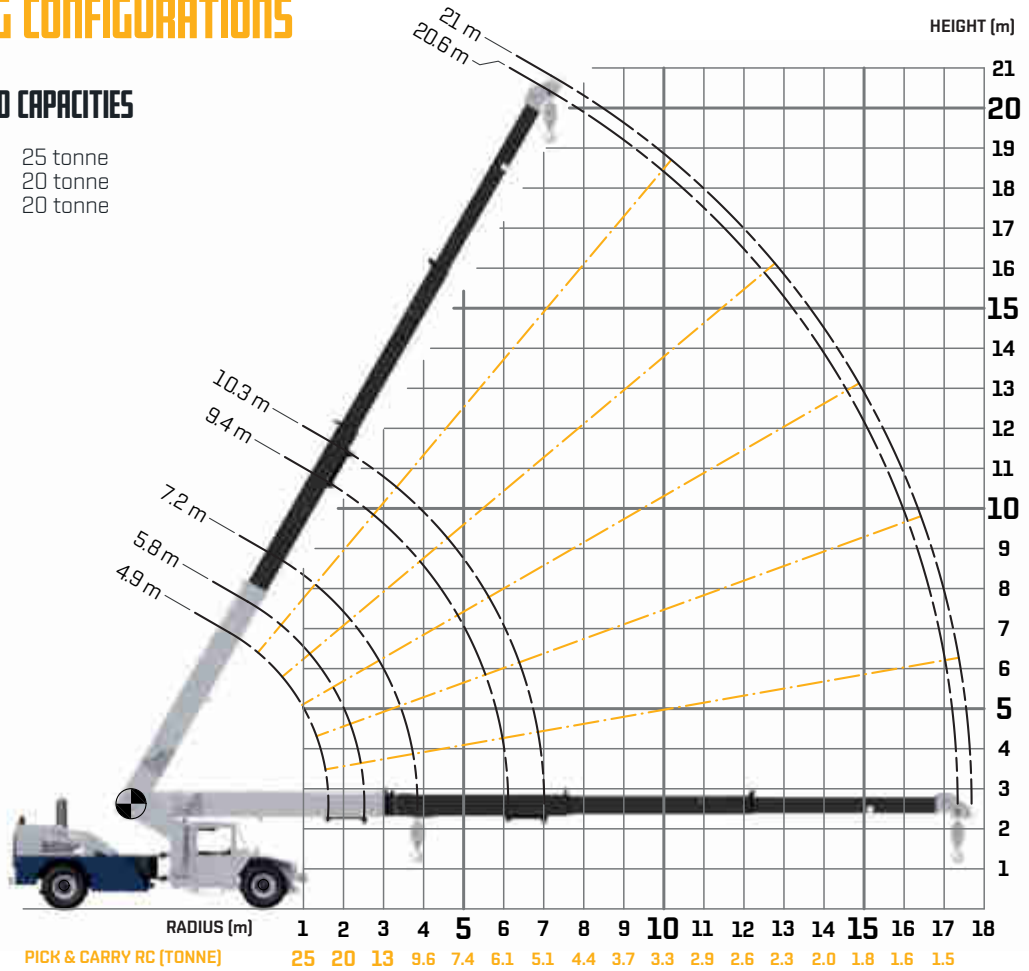
AXLE LOADINGS

- » Front axle 11,500kg
- » Rear axle 11,800kg

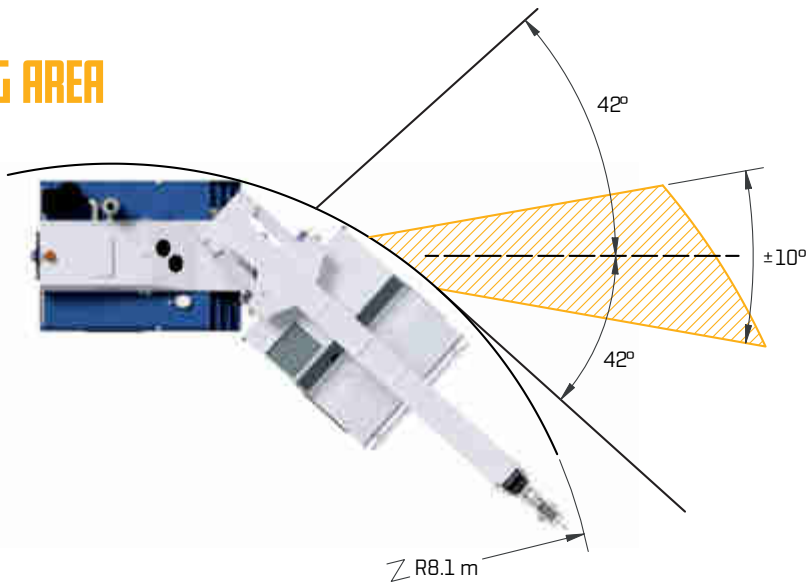
ALL LIFTING CONFIGURATIONS

MAXIMUM RATED CAPACITIES

Sliding Hook MRC: 25 tonne
 Winch Hook MRC: 20 tonne
 Rhino Hook MRC: 20 tonne



WORKING AREA



Matera

The manufacturer reserves the right to alter the product specification without notice.

*Road registration in approved states.